

## Elodie Burls | Where Shadows Fall

"These works were created during my time in Japan, where the forests of Narusawa and the shadows of Aokigahara shaped my vision. The landscapes felt otherworldly — both unsettling and mesmerizing. Navigating a rules-driven society, a language barrier, and my own sense of isolation, I turned to painting as a way to connect with something deeper. Through these works, part of my '20 Paintings in 20 Days: Japan series', I sought a dialogue with nature -where shadows fall, silence speaks, and light transforms."

# 99 LOOP



ELODIE BURLS

*Seek*, 2025

Ink and bleach on resin coated paper (framed with museum-quality glass)

29.7 x 21 cm / 36 x 27.5 x 3.5 cm framed

ZAR 5,500



ELODIE BURLS

*Where the Wild*, 2025

Ink and bleach on resin coated paper (framed with museum-quality glass)

21 x 29.7 cm / 27.5 x 36 x 3.5 cm framed

ZAR 5,500





ELODIE BURLS

*Turn Around, 2025*

Ink and bleach on resin coated paper (framed with museum-quality glass)

21 x 29.7 cm / 27.5 x 36 x 3.5 cm framed

ZAR 5,500

# 99 LOOP



ELODIE BURLS

*Trail's End*, 2025

Ink and bleach on resin coated paper (framed with museum-quality glass)

29.7 x 21 cm / 36 x 27.5 x 3.5 cm framed

ZAR 5,500





ELODIE BURLS

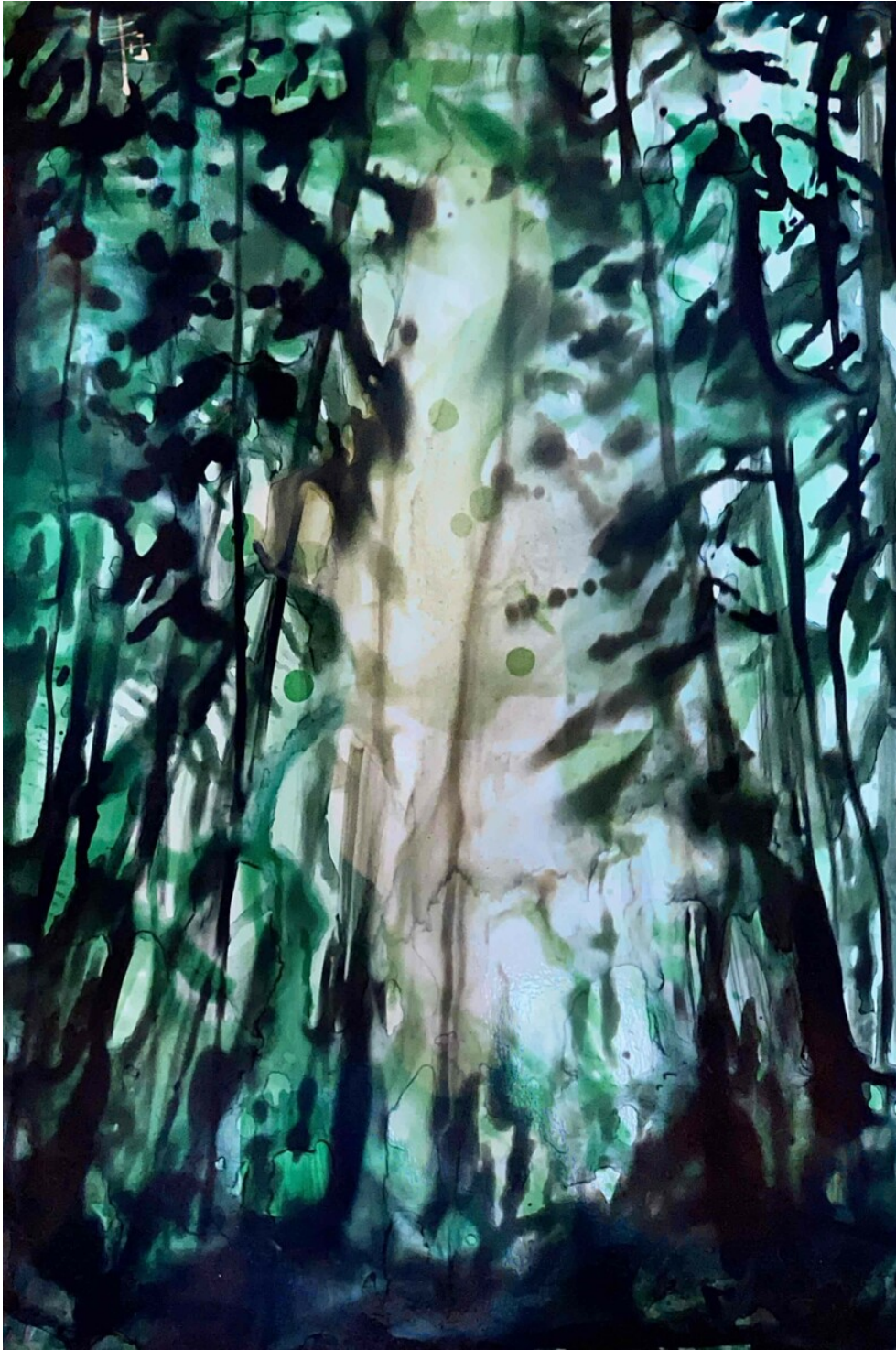
*Wag You, 2025*

Ink and bleach on resin coated paper (framed with museum-quality glass)

21 x 29.7 cm / 27.5 x 36 x 3.5 cm framed

ZAR 5,500

# 99 LOOP



ELODIE BURLS

*I Am Your*, 2025

Ink and bleach on resin coated paper (framed with museum-quality glass)

29.7 x 21 cm / 36 x 27.5 x 3.5 cm framed

ZAR 5,500



# 99 LOOP



ELODIE BURLS

*Which one are you, 2025*

Ink and bleach on resin coated paper (framed with museum-quality glass)

21 x 29.7 cm / 27.5 x 36 x 3.5 cm framed

ZAR 5,500





ELODIE BURLS

*Hidden Figures #2, 2025*

Ink and bleach on resin coated paper (framed with museum-quality glass)

29.7 x 21 cm / 36 x 27.5 x 3.5 cm framed

ZAR 5,500



# 99 LOOP



ELODIE BURLS

*Reconsider, 2024*

Ink on waterproof paper

59 x 44 cm / 60.5 x 54 x 3.5 cm framed

ZAR 11,000





ELODIE BURLS  
*Contemplate*, 2024  
Ink on waterproof paper  
46 x 28 cm / 55.5 x 37 x 3.5 cm framed  
ZAR 8,000

## About the Artist | Elodie Burls

"My artistic practice is rooted in the exploration of the human relationship with the natural world. Inspired by the fragility of our existence, I often incorporate imagery of permeable materials like glass into my work, symbolizing the delicate balance between protection and vulnerability. As I create these threshold spaces, I ponder the future of our relationship with the environment and the possibility that we may need to redefine our boundaries with nature.

My art imagines a world where the distinctions between interior and exterior, self and environment, are increasingly ambiguous. While my work touches on apocalyptic themes, it's tempered with a hopeful streak – a recognition that even in the face of uncertainty, we might find ways to adapt and redefine our connection to the world around us."

### Technique:

I work primarily with ink and bleach on resin coated paper, a technique I developed early in 2024. This process allows me to build up layers of color and texture, and then selectively alter or remove them, creating subtle shifts in tone and texture. The resin coated paper provides a durable surface that can withstand multiple applications of ink and bleach, enabling me to work iteratively and refine my compositions.

### Journey:

I began painting at the age of 40, during a major transition in my life. Art quickly became my lifeline, a source of magic and transformation that helped me navigate the unknown. As I've continued to create, I've found that my art is not just a means of self-expression, but a way of exploring the world and our place within it. I'm passionate about sharing my work with others, and I'm excited to see where this journey takes me.